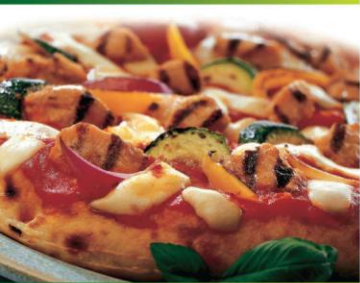




Dawn Farms Ingredients



PROD CODE	DESCRIPTION	CASE CONFIG.
PORK		
Standard Ham (smoke flavoured)		
1444	Ham Stamps	2 x 10KG
1700	Julienne Ham	2 x 10KG
1073	Ham log (chilled)	Avg 12 kg
Premium smoke flavoured ham		
1200	Ham Stamps	2 x 10KG
1421	Julienne Ham	2 x 10KG
Unsmoked ham		
1785	Ham Stamps	2 x 10KG
1980	Julienne Ham	2 x 10KG
1072	Ham log (chilled)	Avg 12 kg
9100	Bacon lardons	2 x 10KG
5407	Cooked ground pork 4mm	2 x 10KG
BEEF		
2622	Standard Beef strips	2 x 10KG
2380	Beef Log (Chilled)	Avg 12 kg
2250	Beef strips (Spicy)	2 x 10KG
2623	Cooked ground beef 3.2mm	2 x 10KG
2624	Cooked ground beef 6mm	2 x 10KG
2385	Meatballs 7 – 9g	2 x 10KG
2648	Meatballs 12 –14g	2 x 10KG
2079	Spicy beef chunks	2 x 10KG
2087	Chilli beef chunks	2 x 10KG
CHICKEN		
6088	Plain Chicken Strips	2 x 10KG
6110	BBQ chicken strips	2 x 10KG
6112	Chicken strips (Chargrill Flavour)	2 x 10KG
6028	Tikka Chicken strips	2 x 10KG
FERMENTED MEATS		
7857	Sliced pepperoni	1 x 12KG
7858	Sliced Salami	1 x 12KG
7859	Diced Pepperoni	1 x 12KG

For further information on these products or to request samples and pricing information, please contact:

Dawn Farm Foods, The Maudlins, Naas, Co. Kildare
 Tel: +353 (0)45 875555 UK Enquiries: +44 (0)1772 750450
 Email: info@dawnfarms.ie www.dawnfarms.ie